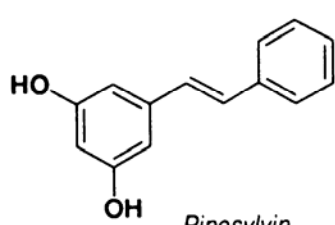


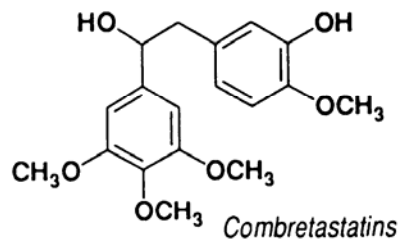
2.2.2 Stilbenoidy

Základ vychází z molekuly stilbenu – 1,2-difenylethenu (aglykony, glykosidy, polymery: mnoho čeledí

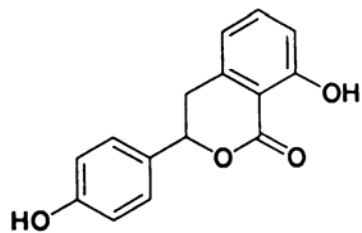
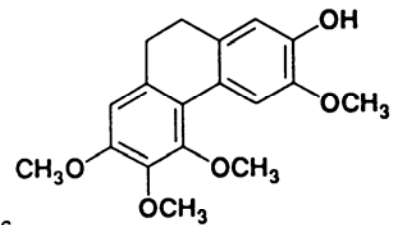
(Orchidaceae, Combretaceae, Dioscoreaceae), lišejníky (Bryum, Mnium, Polytrichum)



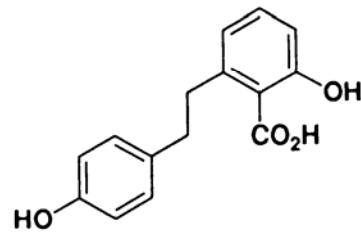
Pinosylvin



Combretastatins



Hydrangenol



Lunularic acid