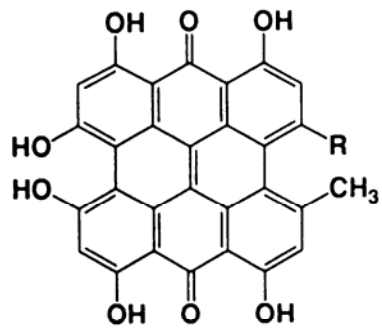


2.5.3 Naftodianthrony

Angiospermae, dvouděložné: významně především v čeledích Hypericaceae, Lamiaceae

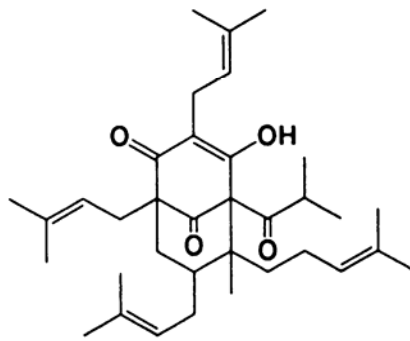
☞ Hypericaceae – *Hypericum perforatum* ad.

☞ Lamiaceae – *Salvia miltiorrhiza*

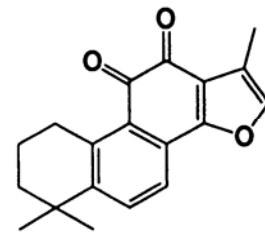


R = CH₃, *Hypericin*

R = CH₂OH, *Pseudohypericin*



Hyperforin



Tanshinone-IIA