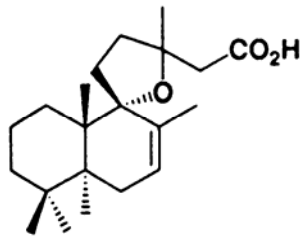


### 2.7.3 Diterpeny

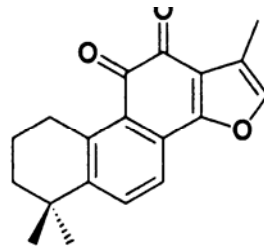
Pevné, bílé (bezbarvé) krystalické látky, nepáchnoucí, ale různé chuti

Existuje cca 1200 sloučenin, systémově v ř. Lamiales, Asterales, velice roztroušeně v ř. Gentianales, Geraniales, Fabales.

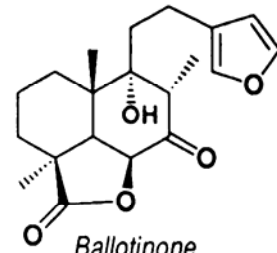
Toxické pro teplokrevné: č. Thymelaeaceae, Euphorbiaceae, Ericaceae



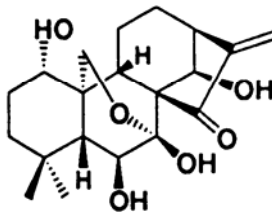
*Grindelic acid*



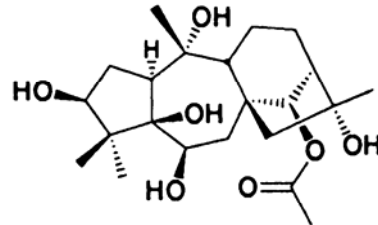
*Tanshinone II*



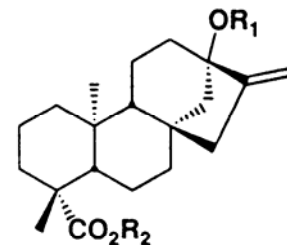
*Ballotinine*



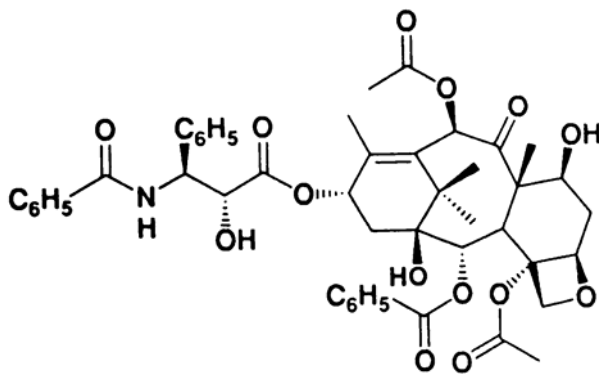
*Oridonin*



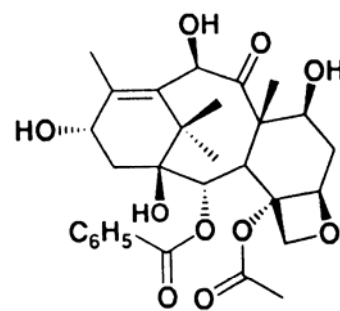
*Grayanotoxin I*



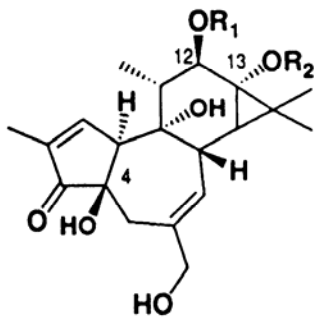
R<sub>1</sub> = glc(1→2) glc,  
R<sub>2</sub> = glc : Stevioside



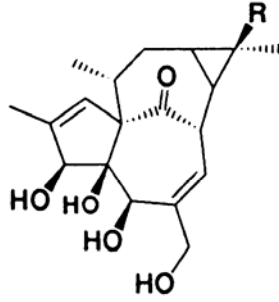
*Taxol*



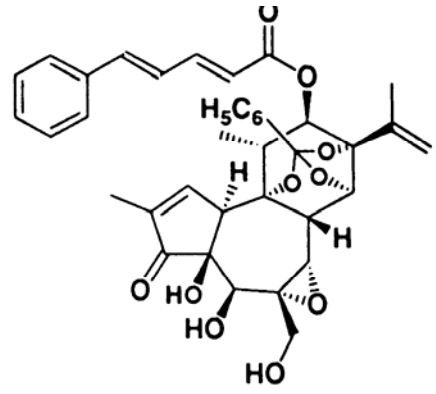
*10-Deacetylbaccatin III*



*Phorbol esters*  
 $R_1$  = tetradecanoate,  
 $R_2$  = acetate : TPA



*Ingenol and*  
*17-hydroxy-ingenol*



*Mezerein*