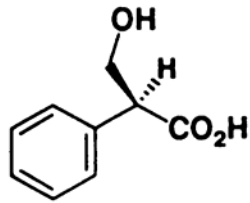


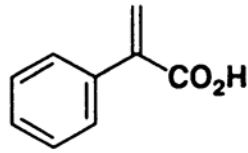
2.8.1 Alkaloidy pocházející z ornithinu a lysinu

2.8.1.1 Tropanové alkaloidy

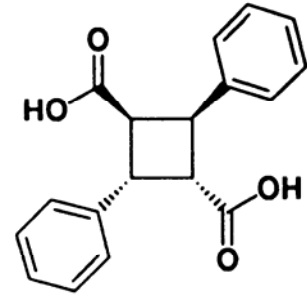
☞ Solanaceae - *Atropa belladonna*, *Hyoscyamus niger*, *Scopolia* sp., *Datura* sp.



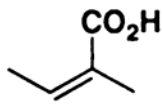
Tropic acid



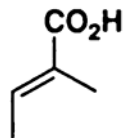
*Apotropic acid
(atropic acid)*



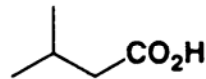
α-Truxillic acid



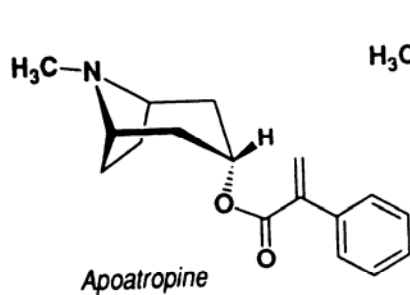
Angelic acid



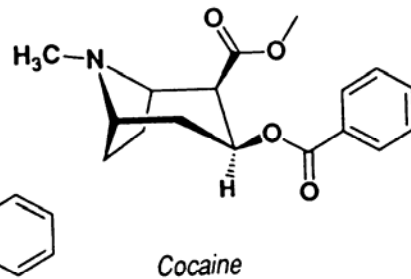
Tiglic acid



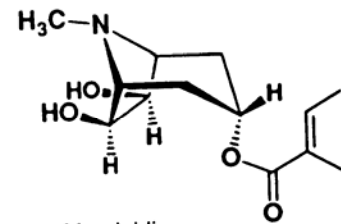
Isovaleric acid



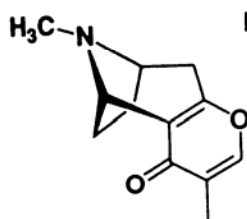
Apotropine



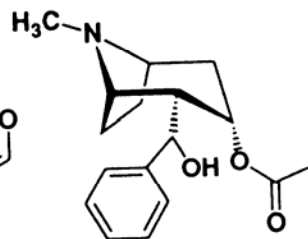
Cocaine



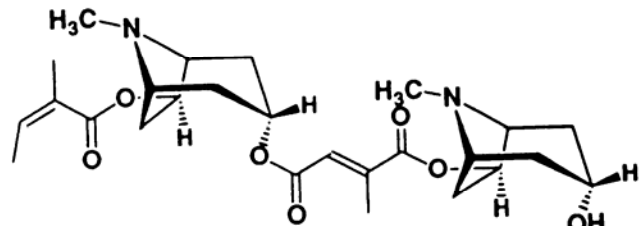
Meteloidine



Bellendine

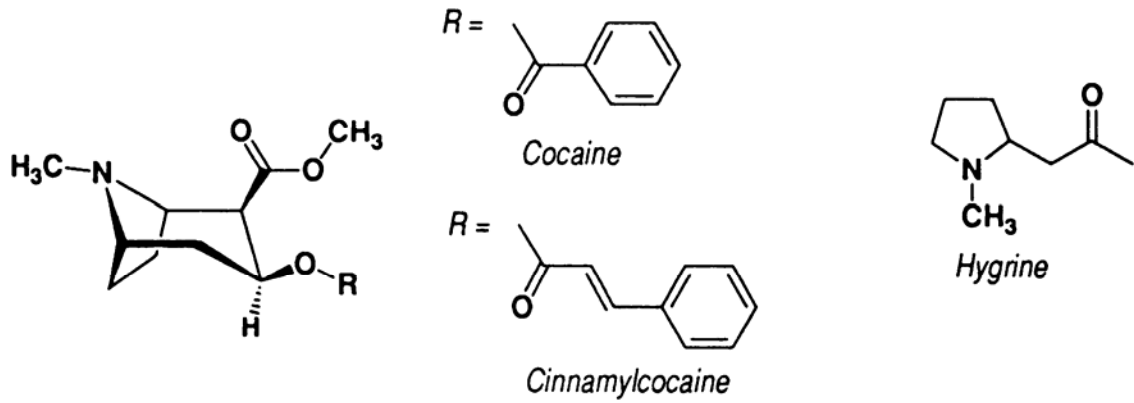


Knightinol



Schizanthine D

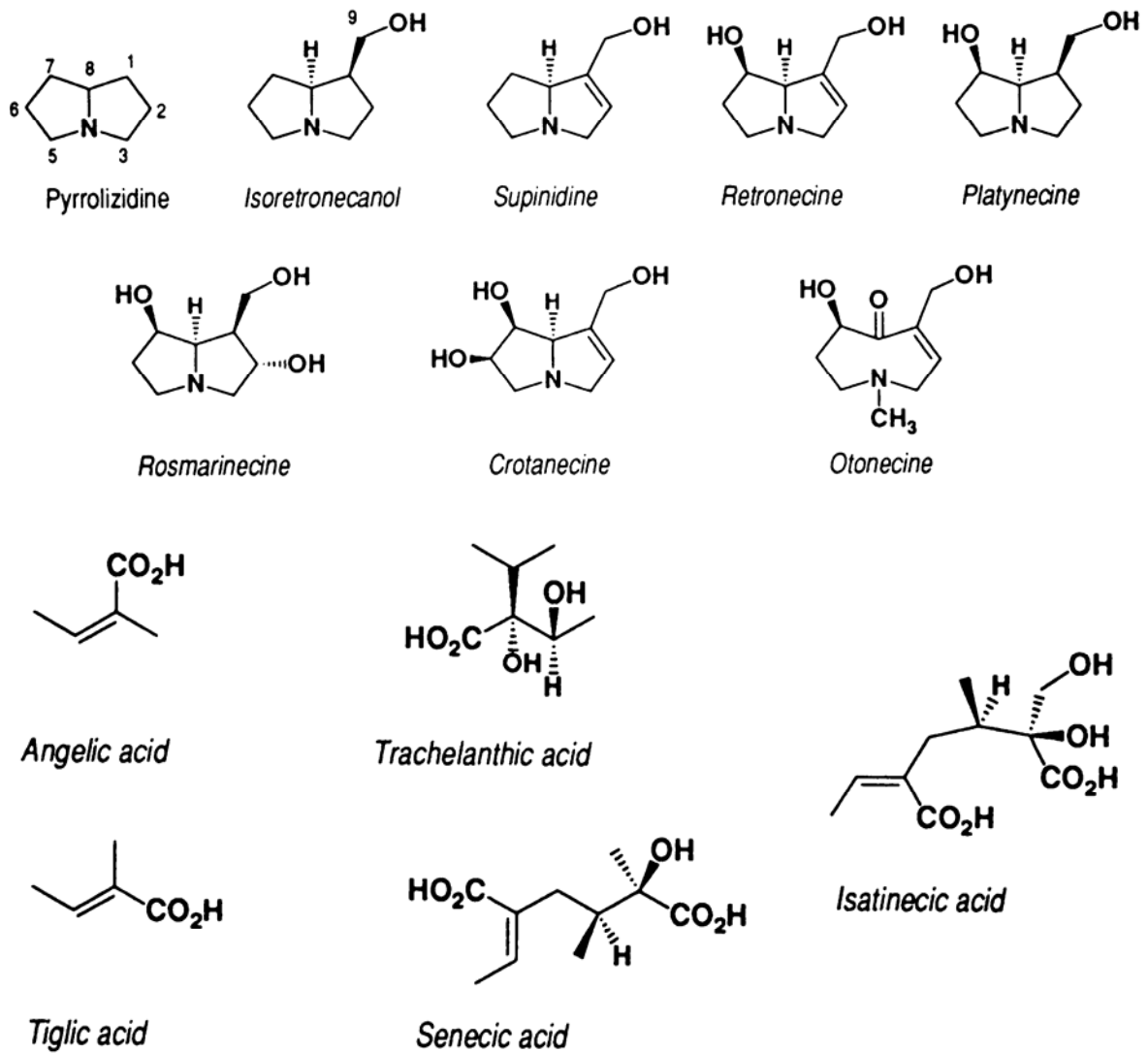
☞ Erythroxylaceae - *Erythroxylum coca*

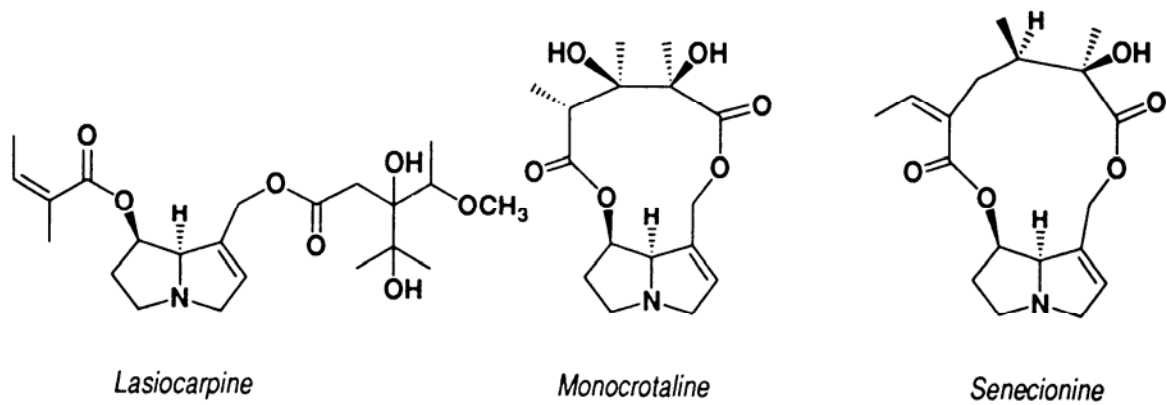


2.8.1.2 Pyrrolizidinové alkaloidy

☞ Boraginaceae - *Borago officinalis*, *Symphytum officinale*

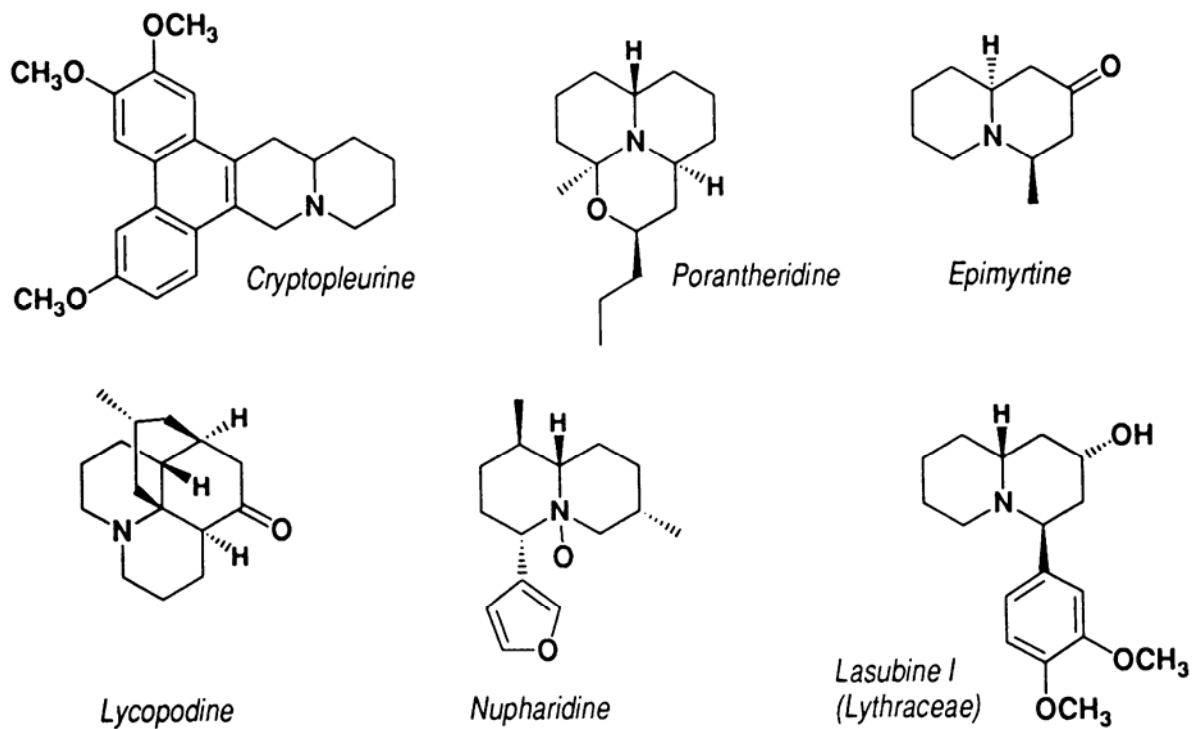
☞ Asteraceae - *Tussilago farfara*, *Eupatorium* sp., *Senecio* sp.

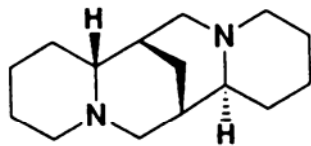




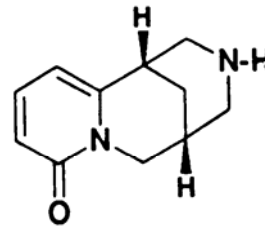
2.8.1.3 Chinolizidinové alkaloidy

- ☞ Fabaceae (především) – *Anabasis* sp., *Lupinus* sp., *Sophora* sp. aj.
- ☞ Vacciniaceae – *Vaccinium myrtillus* aj.
- ☞ Lycopodiaceae – *Lycopodium* sp.
- ☞ Nymphaeaceae – *Nuphar* sp.
- ☞ Lythraceae – *Heimia salicifolia*, *Lagerstromia subcostata* aj.
- ☞ Leonticaceae - *Leontice leontopetalum*





(-)-Sparteine



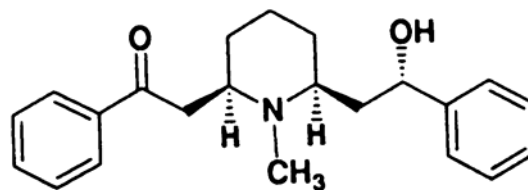
(-)-Cytisine

2.8.1.4 Indolizidinové alkaloidy

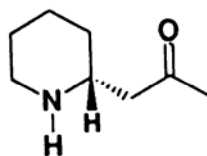
- 📁 Orchidaceae – *Dendrobium* sp.
- 📁 Convolvulaceae – *Ipomea* sp.
- 📁 Moraceae – *Ficus* sp. aj.
- 📁 Elaeocarpaceae – *Elaeocarpus* sp.
- 📁 Fabaceae – *Astragalus* sp.

2.8.1.5 Piperidinové alkaloidy

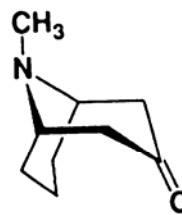
- 📁 Lobeliaceae – *Lobelia inflata*
- 📁 Punicaceae – *Punica granatum*



Lobeline



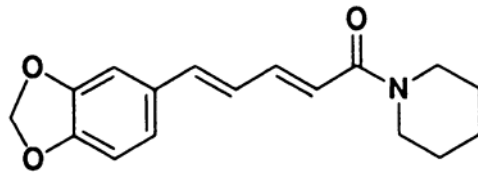
Pelletierine



Pseudo-pelletierine

2.8.1.6 Piperidonové amidy: Piperaceae

- 📁 Piperaceae - *Piper nigrum*



Piperine

2.8.1.7 Piperidinové alkaloidy mimo metabolismus lysinu

☞ Apiaceae - *Conium maculatum*

☞ Caricaceae - *Carica papaya*

