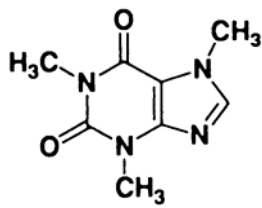


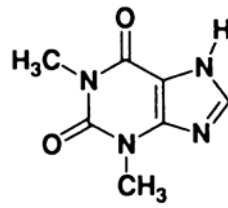
2.8.9 Purinové baze

anelace pyrimidinu + imidazolu; často jsou pokládány za nealkaloidní látky.

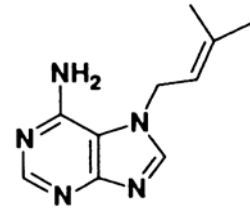
- ☞ Aquifoliaceae - *Ilex paraguariensis*
- ☞ Rubiaceae - *Coffea* sp.
- ☞ Sapindaceae - *Paulinia cupana*
- ☞ Sterculiaceae - *Theobroma cacao*, *Cola* sp.
- ☞ Theaceae - *Camellia sinensis* s. l.



Caffeine



Theophylline



Triacanthine